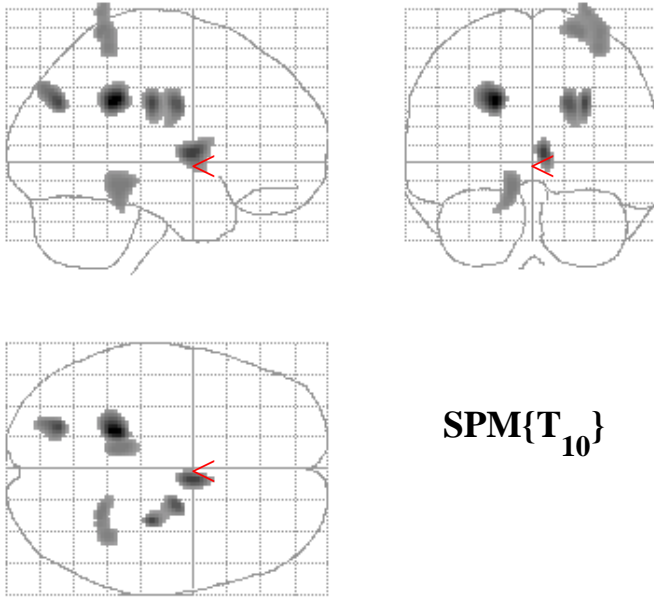
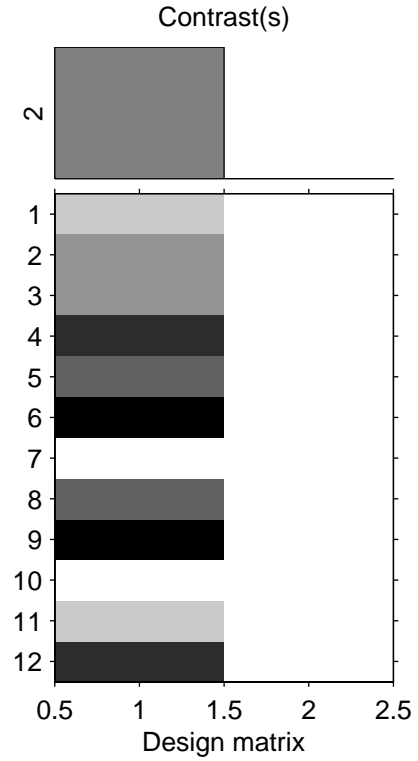


Positive slope for Task Difficulty



SPMresults: /Imagers/Sample_ana/99
 Height threshold T = 2.76
 Extent threshold k = 127 voxels



Statistics: volume summary (*p*-values corrected for entire volume)

set-level		cluster-level			voxel-level			x,y,z {mm}			
<i>p</i>	<i>c</i>	<i>p</i> _{corrected}	<i>k</i>	<i>p</i> _{uncorrected}	<i>p</i> _{corrected}	<i>T</i>	(<i>Z</i> _≡)	<i>p</i> _{uncorrected}			
0.461	6	0.819	290	0.065	0.280	7.96	(4.37)	0.000	-20	-42	34
		0.987	155	0.165	0.845	5.79	(3.75)	0.000	6	0	6
		0.874	260	0.079	0.898	5.56	(3.67)	0.000	28	-22	32
					0.970	5.07	(3.49)	0.000	20	-8	30
		0.983	163	0.156	0.911	5.49	(3.65)	0.000	-22	-72	32
		0.849	274	0.072	1.000	3.97	(3.01)	0.001	26	-50	70
					1.000	3.80	(2.92)	0.002	36	-46	70
					1.000	3.63	(2.83)	0.002	30	-50	80
		0.970	184	0.133	1.000	3.96	(3.00)	0.001	-10	-40	-12

table shows at most 3 maxima > 8.0mm apart per cluster

Height threshold: T = 2.76, *p* = 0.010 (1.000 corrected)
 Extent threshold: k = 127 voxels, *p* = 0.207 (0.996 corrected)
 Expected voxels per cluster, <*k*> = 85.352
 Expected number of clusters, <*c*> = 5.44

Degrees of freedom = [1.0, 10.0]
 Smoothness FWHM = 15.1 17.3 19.4 {mm} = 7.6 8.6 9.7 {voxels}
 Search volume: S = 1905496 mm³ = 238187 voxels = 353.8 resels
 Voxel size: [2.0, 2.0, 2.0] mm (1 resel = 634.43 voxels)